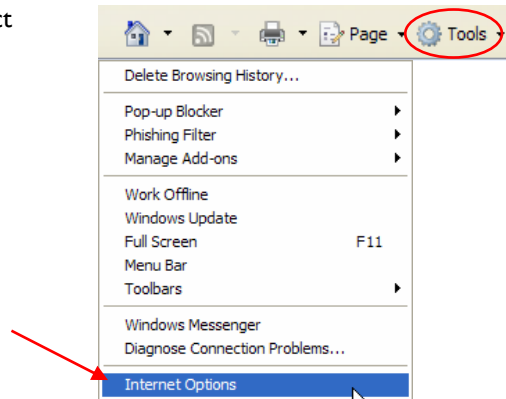


Configuring Your Browser for Easier Downloading From [EPRI.com](http://www.epri.com)

Follow these steps to enable a smoother download process when using [EPRI.com](http://www.epri.com) to access documents.

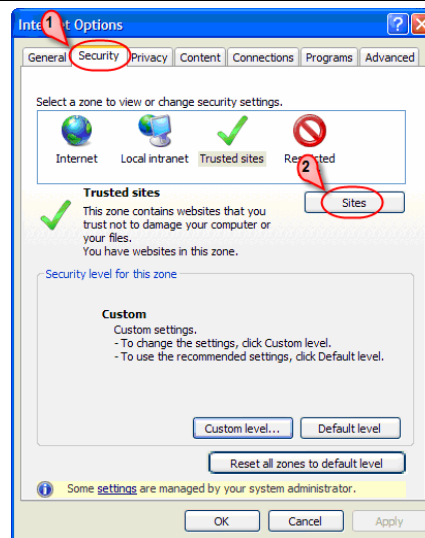
Go to [EPRI.com](http://www.epri.com)—Click *Tools* in the browser menu and select *Internet Options*.



1 Click the *Security* tab.

If www.epri.com is already setup as a trusted site then “Trusted sites” is highlighted.

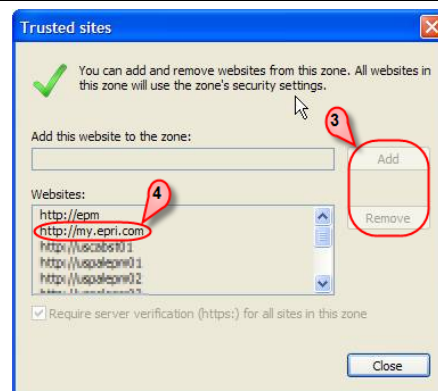
2 If www.epri.com is not already a trusted site then click *Sites*.



3 If the *Add* and *Remove* buttons are grayed out, then contact your IT department.

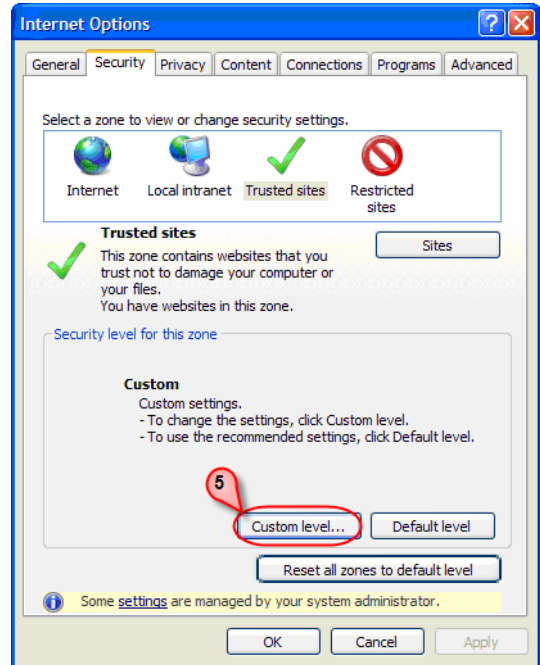
4 If <http://my.epri.com> is not present in the Websites list type it in the box and then click *Add*.

Click Close to go back to the *Security* window.



Go back to the *Security* tab.

5 Click *Custom level...*

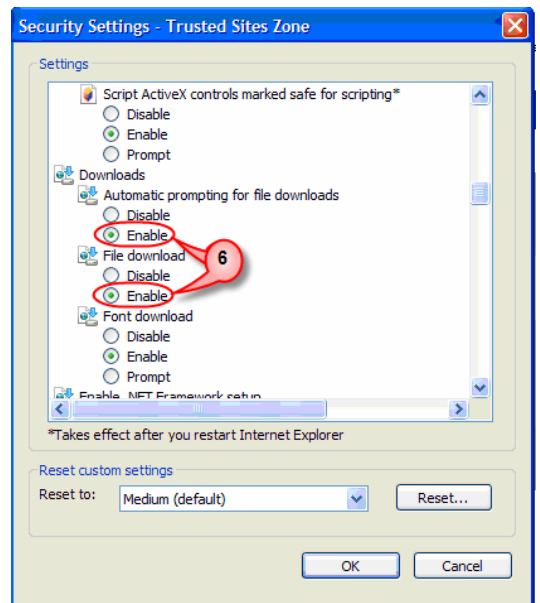


Scroll down to the *Downloads* settings and click *Enable* in the *Automatic prompting for file downloads* section.

6 Also click *Enable* in the *File download* section.

Click *OK*.

Note: these settings take effect after you restart your browser (close your browser and then open a new browser window).



[EPRI.com](#) Website Assistance

- If you need assistance on the website: Check the *Help* page (upper right corner) for FAQs and tutorials – you don't need to be logged in.
- If you need more specific assistance, contact the EPRI Customer Assistance Center at 800.313.3774 (or 650.855.2121), option 4, or email askepri@epri.com, or visit the *Contact Us* page on [EPRI.com](#).

December 2006

Electric Power Research Institute

3420 Hillview Avenue, Palo Alto, California 94304 • PO Box 10412, Palo Alto, California 94303 USA
800.313.3774 • 650.855.2121 • askepri@epri.com • www.epri.com