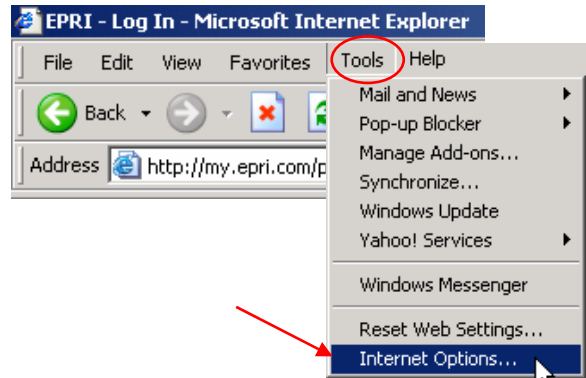


Configuring Your Browser for Easier Downloading From [EPRI.com](http://www.epri.com)

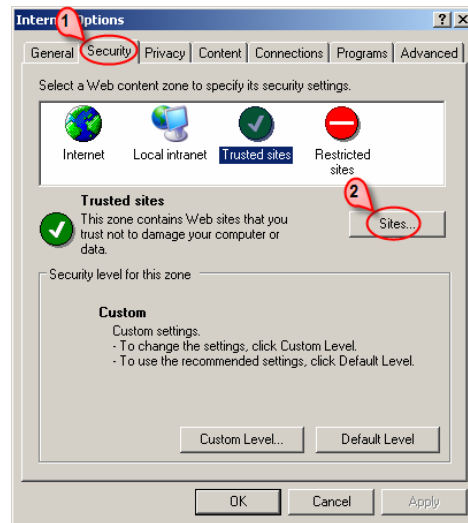
Follow these steps to enable a smoother download process when using [EPRI.com](http://www.epri.com) to access documents.

Go to [EPRI.com](http://www.epri.com)—Click *Tools* in the browser menu and select *Internet Options*.



1 Click the *Security* tab.

If www.epri.com is already setup as a trusted site then “Trusted sites” is highlighted.

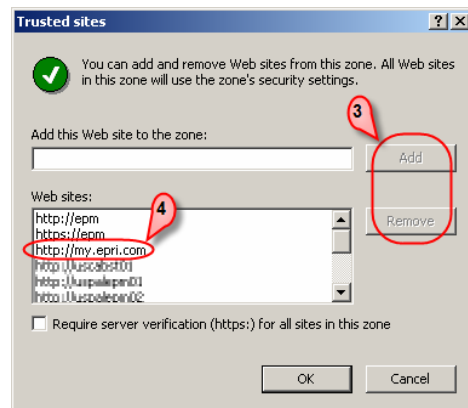


2 If www.epri.com is not already a trusted site then click *Sites*.

3 If the *Add* and *Remove* buttons are grayed out, then contact your IT department.

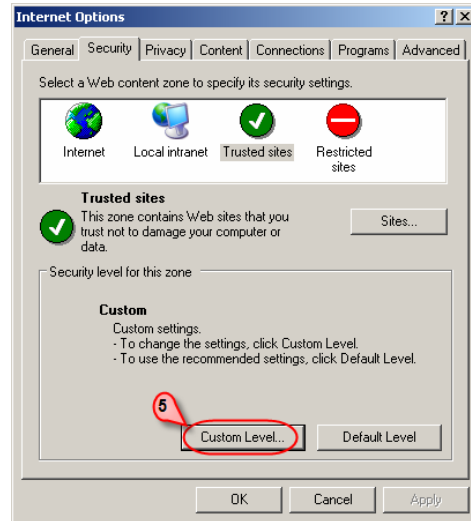
4 If those buttons are not gray, then click <http://my.epri.com> from the list and then click *Add*.

Click *OK* to go back to the *Security* window.



Go back to the *Security* tab.

5 Click *Custom level...*

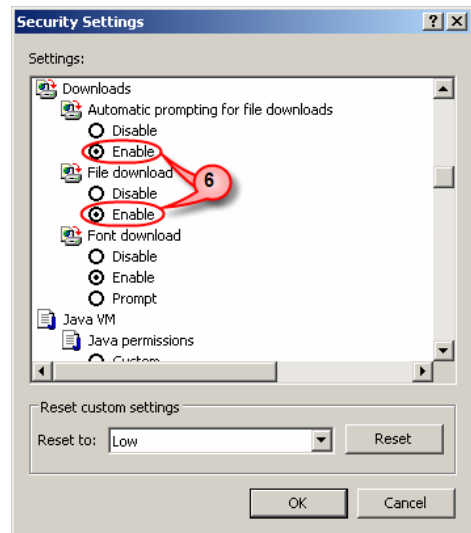


Scroll down to the *Downloads* settings and click *Enable* in the *Automatic prompting for file downloads* section.

6 Also click *Enable* in the *File download* section.

Click *OK*.

Note: these settings take effect after you restart your browser (close your browser and then open a new browser window).



[EPRI.com](http://www.epri.com) Website Assistance


- If you need assistance on the website:
Check the *Help* page (upper right corner) for FAQs and tutorials – you don't need to be logged in.
- If you need more specific assistance, contact the EPRI Customer Assistance Center at 800.313.3774 (or 650.855.2121), option 4, or email askepri@epri.com, or visit the *Contact Us* page on [EPRI.com](http://www.epri.com).

December 2006

Electric Power Research Institute

3420 Hillview Avenue, Palo Alto, California 94304 • PO Box 10412, Palo Alto, California 94303 USA
800.313.3774 • 650.855.2121 • askepri@epri.com • www.epri.com

© 2006 Electric Power Research Institute (EPRI), Inc. All rights reserved. Electric Power Research Institute and EPRI are registered service marks of the Electric Power Research Institute.

 Printed on recycled paper in the United States of America